



## The Iconic Women's Mid Lightweight Polo

Fitted

XS &gt; XXL

185 GSM

### Details

- Set-in sleeve
- Flat knit rib on collar and sleeve hem
- Inside heavy single jersey back neck tape
- Front inserted placket with 2 buttons in matching body colour
- Slit and bartack finish at side seam hem
- Single needle topstitch at shoulder seams
- Bottom hem with narrow double needle topstitch

### Composition

Shell - Piqué  
 100% Cotton - Organic Ring Spun Combed - , 185.0 GSM  
 Panel washed

### Care

Wash similar colours together, no ironing on print, wash and iron inside out.



### Country of origin

Weaving : Bangladesh  
 Dyeing : Bangladesh  
 Assembly : Bangladesh



Organic  
 Certified by Control Union  
 CU 619434



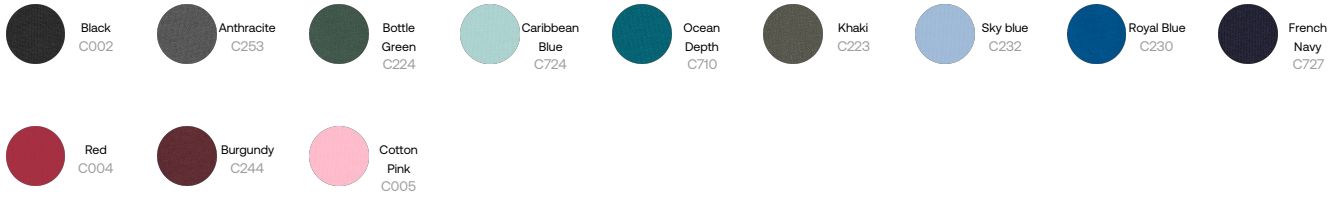
STANDARD  
 100  
 2012163  
 Centexbel  
[www.oeko-tex.com](http://www.oeko-tex.com)



Whites



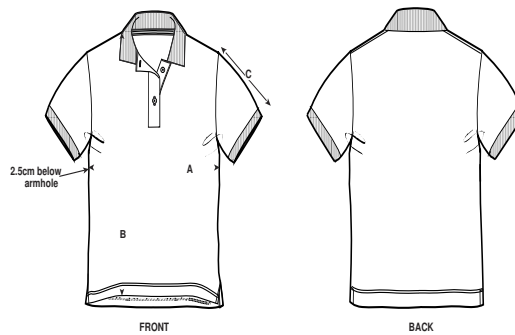
Colors



Essential Heathers



Size Guide



Sizes		XS	S	M	L	XL	XXL
A	Half Chest	42	45	48	51	55	59
B	Body Length	60	62	64	66	68	70
C	Sleeve Length	17.5	18	18.5	19	19.5	20

Packing

Sizes		XS	S	M	L	XL	XXL
	Pieces/bag	1	1	1	1	1	1
	Pieces/box	50	50	50	50	50	50